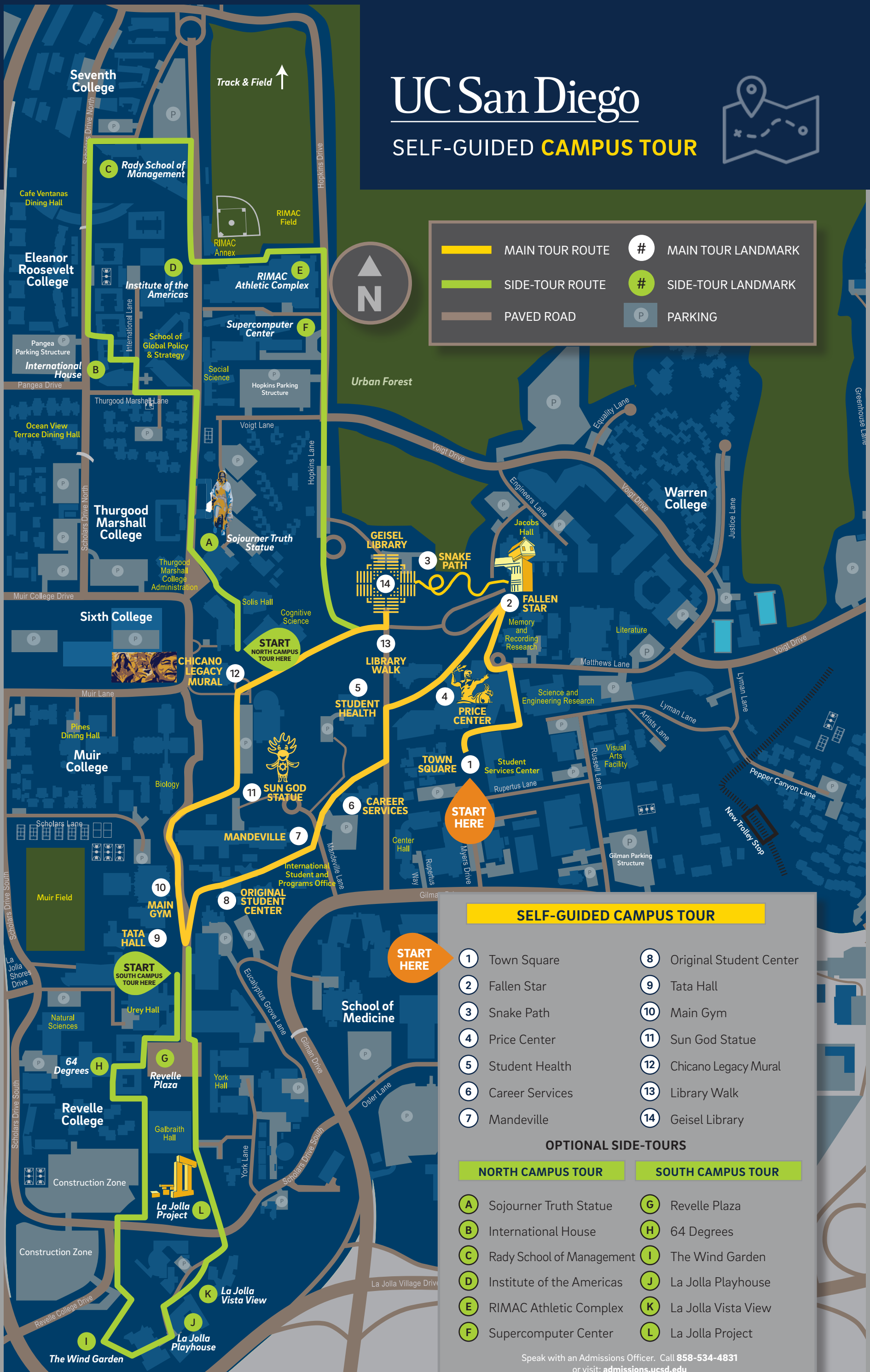


UC San Diego

SELF-GUIDED **CAMPUS TOUR**



	MAIN TOUR ROUTE		MAIN TOUR LANDMARK
	SIDE-TOUR ROUTE		SIDE-TOUR LANDMARK
	PAVED ROAD		PARKING



SELF-GUIDED CAMPUS TOUR

1 Town Square	8 Original Student Center
2 Fallen Star	9 Tata Hall
3 Snake Path	10 Main Gym
4 Price Center	11 Sun God Statue
5 Student Health	12 Chicano Legacy Mural
6 Career Services	13 Library Walk
7 Mandeville	14 Geisel Library

OPTIONAL SIDE-TOURS

NORTH CAMPUS TOUR	SOUTH CAMPUS TOUR
A Sojourner Truth Statue	G Revelle Plaza
B International House	H 64 Degrees
C Rady School of Management	I The Wind Garden
D Institute of the Americas	J La Jolla Playhouse
E RIMAC Athletic Complex	K La Jolla Vista View
F Supercomputer Center	L La Jolla Project

Speak with an Admissions Officer. Call **858-534-4831** or visit: admissions.ucsd.edu



1 TOWN SQUARE

Many fun events take place in this area throughout the year, such as a weekly farmers' market and our fall music festival, Hullabaloo.

2 FALLEN STAR (2012) – Stuart Collection

This piece explores the notions of home, cultural displacement and the perception of space. Get a look inside Fallen Star, Tuesdays and Thursdays between 11 a.m.-2 p.m. No reservations necessary.

3 SNAKE PATH (1992) – Stuart Collection

Snake Path is a "living and breathing" artwork that resembles a snake shedding its skin as old tiles are replaced with new tiles of different colors every time one breaks.

4 PRICE CENTER

UC San Diego's student union, which houses the bookstore, student government office, a theater, food court and many other amenities for students to unwind and enjoy.

5 STUDENT HEALTH SERVICES

Student Health Services (SHS) offers a wide range of healthcare services for students, including primary medical care, urgent care and mental health services.

6 CAREER SERVICES CENTER

The Career Services Center helps students discover exciting internship, research and job opportunities, both on and off campus.

7 MANDEVILLE CENTER

Mandeville Center contains several art-making spaces where students can engage in painting, drawing, sculpting and woodworking.

8 ORIGINAL STUDENT CENTER

This center is home to many of our supportive spaces, including the Black Resource Center, Women's Center, and the LGBT Resource Center. This area also offers shops and great eateries, like Taco Villa and Blue Pepper.

9 TATA HALL FOR THE SCIENCES

Opened in 2018, this cutting-edge science building contains four floors of biology and chemistry research facilities, two floors of teaching labs, Tata Institute for Genetics and Society (TIGS) and more.

10 MAIN GYM

Main Gym is one of several athletics facilities on campus. This gym is a 115' x 100' space used for basketball, volleyball, martial arts, dance and exercise activities, as well as lectures, concerts and exhibitions.

11 SUN GOD (1983) – Stuart Collection

Sun God was the first art piece commissioned by the Stuart Collection. The piece inspired UC San Diego's annual Sun God music festival.

12 CHICANO LEGACY 40 AÑOS MURAL

This 17' x 54' mosaic mural, which is made up of thousands of colored glass pieces, was unveiled in 2011.

13 LIBRARY WALK

At the center of campus, this path is the main walkway to Geisel Library and hosts student organizations, a vendor fair, and more throughout the year.

14 GEISEL LIBRARY

Named in honor of Theodor Geisel (aka Dr. Seuss), Geisel Library is ranked among the nation's top 25 public academic libraries.

For more information on the Stuart Collection visit stuartcollection.ucsd.edu

NORTH CAMPUS SIDE-TOUR

A SOJOURNER TRUTH STATUE

Statue honors the famed abolitionist and women's rights activist.

B INTERNATIONAL HOUSE

Application-only housing for both U.S. and international students.

C RADY SCHOOL OF MANAGEMENT

Graduate business school offers select undergraduate minors.

D INSTITUTE OF THE AMERICAS

Promotes sound public policy across the world.

E RIMAC (Recreational and Intramural Athletic Complex)

The largest gym on campus, with four floors of weight rooms, playing courts and nap pods.

F SUPERCOMPUTER CENTER

Established in 1985, this center is now a leader in data-intensive computing and cyberinfrastructure.

SOUTH CAMPUS SIDE-TOUR

G REVELLE PLAZA

The center of UC San Diego's first college: Revelle College.

H 64 DEGREES

Revelle College dining hall, serving burgers, salads and more.

I THE WIND GARDEN (2017) – Stuart Collection

Using real-time atmospheric readings, this Stuart Collection piece creates unique music based on the wind and weather.

J LA JOLLA PLAYHOUSE

Tony Award-winning facility that hosts theater and dance shows year-round.

K LA JOLLA VISTA VIEW (1988) – Stuart Collection

This piece pairs gorgeous views of La Jolla with a glimpse of the city's past.

L THE LA JOLLA PROJECT (1984) – Stuart Collection

This piece resembles the United Kingdom's Stonehenge.

▶ Download UC San Diego Virtual Tour | admissions.ucsd.edu/visit/virtual-tour.html



UC SAN DIEGO COLLEGES

UC San Diego's 1,200-acre campus consists of several smaller college neighborhoods. Every undergraduate student belongs to one of the colleges, which each consist of about 4,700 students and offer their own unique philosophy and general education requirements, as well as services for academic advising, dining halls, fun annual events and more. For more information on our college system, please visit admissions.ucsd.edu/colleges



ELEANOR ROOSEVELT COLLEGE

roosevelt.ucsd.edu

Developing world citizens through scholarship, leadership and service.
Est. 1988



JOHN MUIR COLLEGE

muir.ucsd.edu

Celebrating the independent spirit.
Est. 1967



SEVENTH COLLEGE

seventh.ucsd.edu

Interdisciplinary explorations of our changing planet.
Est. 2019



EARL WARREN COLLEGE

warren.ucsd.edu

Toward a life in balance.
Est. 1974



REVELLE COLLEGE

revelle.ucsd.edu

Where the Arts, Sciences, and Humanities join to create and inspire well-rounded Scholars.
Est. 1964



SIXTH COLLEGE

sixth.ucsd.edu

Innovative – Interconnected – Aware.
Est. 2002



THURGOOD MARSHALL COLLEGE

marshall.ucsd.edu

The Student as Scholar and Citizen.
Est. 1970

UC San Diego

mycompass.ucsd.edu/public